

ON THE RIGHT TRACK



NEWSLETTER

Secretary / Treasurer: Trevor Gardiner
gardiner.trevor@hotmail.com
021 453 695

FEBRUARY 2023

WELCOME:

Hello & welcome to what we hope is great year for us all at TMRC. This is your club, so we need your input to know what you want out of the club. Please email the above address with any thoughts as to what you want you want to happen within the club.

Also, we would really like your help & input in the new layouts under construction. Please come along to either or both of our club days.

Tuesday Morning from 9am to approximately 11.30am.

Thursday Evening from 7pm to approximately 9.30pm.

Please think of the club as:-

Not what can the club do for you, but what can you do for the club.

PRESIDENTS CORNER:

Welcome to our 1st newsletter and the chance to catch up on developments at your club.

Well after the deluge of rain of rain we have all experienced I hope you all kept safe. It is nice to have a hobby like us to keep your body and mind occupied while the rain hammers against the windows.

Our show was very successful with good crowds and of all ages which is very encouraging. It shows that there is still plenty of interest in Railways and modelling scenes of different parts of the world. There is a report on the show in this newsletter and I am sure you will find the articles contained interesting.

The committee and I look forward to seeing you in the club rooms and we have two new layouts in the process of construction so plenty of opportunity to brush up or learn new skills and enjoying the comradeship, coffee, and a chocolate biscuit as well.

Mike Oldfield

President

LAYOUTS:

The various layouts at the club are all working but like anything need continuing maintenance.

Raurimu: The new Raurimu layout is well under way to the extent that we are now looking for members who can come in and help work on the scenery.

Please consider this and put your hand up if you are able to assist.

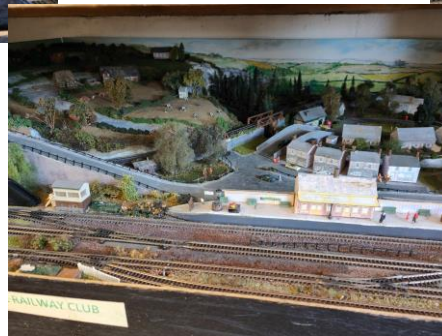
The old Raurimu which has served us well for several years has been sold to a member of TMMEC (Tauranga Model & Marine Engineers Club). We are very happy about this as it has gone to someone that will look after it.



Katikati / Stourbridge: This layout is still running well. The exception is some work being required on the rail joins between some of the modules. This is being worked on now. Thanks to those doing this work.

Sorry I have no pictures of this one.

English N Gauge: This layout just keeps on going. At shows it is very popular and some visitors spend a long time just looking at the scenery to find all the various scenic options on it.



Drive-a-Train / Shunting Puzzle. This is still a popular layout at shows. As it is usually used by young people it gets a lot of wear. Rob keeps it running for us. Thanks Rob.



European: This layout is progressing well now that we have fixed an error in the early laying of the track. Soon we will be at the wiring stage which is going to be DCC. Then onto the scenery of the layout. Being a yard scene, it will



require hands on running on all but the outer loops. As you can see it is a major work area at present.

Club Trailer: This is not a layout but is always a work in hand to maintain and have warrantable. The latest that needed doing on this was to change the tow coupling to one that was more suitable for our needs. This was procured through Rodger who generously donated it to the club.

Thank you, Rodger, for your generosity.

PAST OUTINGS REPORT:

The only past outing was the Annual Show held at Boys College. This was a great success. This has helped get our finances to somewhere near being back on track, so thanks to all that participated. For those that could not help please remember that this is the main fundraiser of the year without which we would not survive. So please when the call goes out for help, **PLEASE** help if possible.

More on the show later in the newsletter.

UPCOMING OUTINGS:

Althorp Rest Home on Tuesday 14 March at 1pm.

Te Puke Country Lodge Tuesday 4 April 1pm.

Alzheimer's Group Tuesday 2 May 1pm.

Please note these are all start times. We need to be there at 12.30pm to set up.

More details closer to the time of each event.

If you are able to help at any of these then please contact myself on gardiner.trevor@hotmail.com

Morrinsville Model Railway Show (hosted by Hamilton Model Railroaders) on 20th & 21st May. We need helpers for this so please put your name forward.

We would prefer to have helpers for a day so if you can help on either day that would be really great.

Taupo Hobby Expo on 8th & 9th July. Again, helpers for a day at a time please.

More detail will be out about all these as they get closer.

Annual General Meeting:

The Annual General Meeting (AGM) is scheduled for Thursday 11th May 2023 7.30pm at the club rooms.

This is an early notice. Formal notice & documents will be sent through at the beginning of April. Amongst them will be nomination forms for ALL positions on the committee. Please nominate who you wish. Remember to get a seconder.

I have attached a nomination form page at the end of this newsletter as well.

Any '**Notice of Motion**' must be in writing (email or letter) and in the Secretary's hands no later than 15 days before the meeting. **27th March.**

There are also nomination forms on the notice board at the club.

REMEMBER: All positions on the committee are open for nomination.

ANNUAL SHOW:

As was said above this show was very successful and has helped us get finances back towards where we want them.

This show is vital to the club to enable us to carry on with quality layouts that are please to both the public and ourselves.

Now that we have been able to sit back a bit to consider the last show and to make changes to some of issues we came up against, planning has already started on the show for 2024.

The dates for 2024 are 20th & 21st January with Friday 19th being allowed for a set up day. Monday morning is set aside to pack up & tidy the hall.

So please, if you are able, set these dates aside now so we can have an even better show next year.

Having said all that below are some shots of the various layouts at this year's show.

This one is Hamburg Station modelled by Ian Campbell of Taupo.





These 2 are our own English N Gauge layout and the Drive-a-Train / Shunting puzzle layout.



The Waikato group bought all the following over.

They are a White Christmas, old quarry historic village, a colliery, all time favourite Thomas both electric & push for the younger children. The electric Thomas is on the next page.



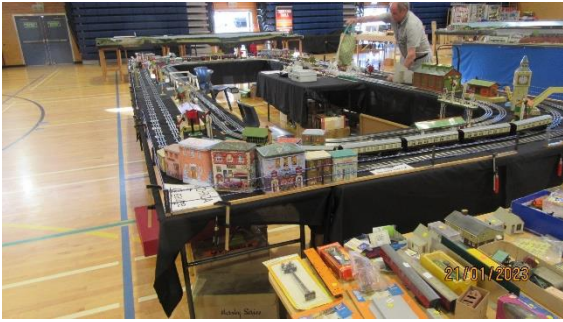


This is the London Underground supplied by Hamilton Model Railroaders. Well worth seeing.



The Hornby O gauge had their display looking good & working as always. A great group of faithful Hornby fans.





The Hamilton Model Railroaders bought this great NZR layout along.



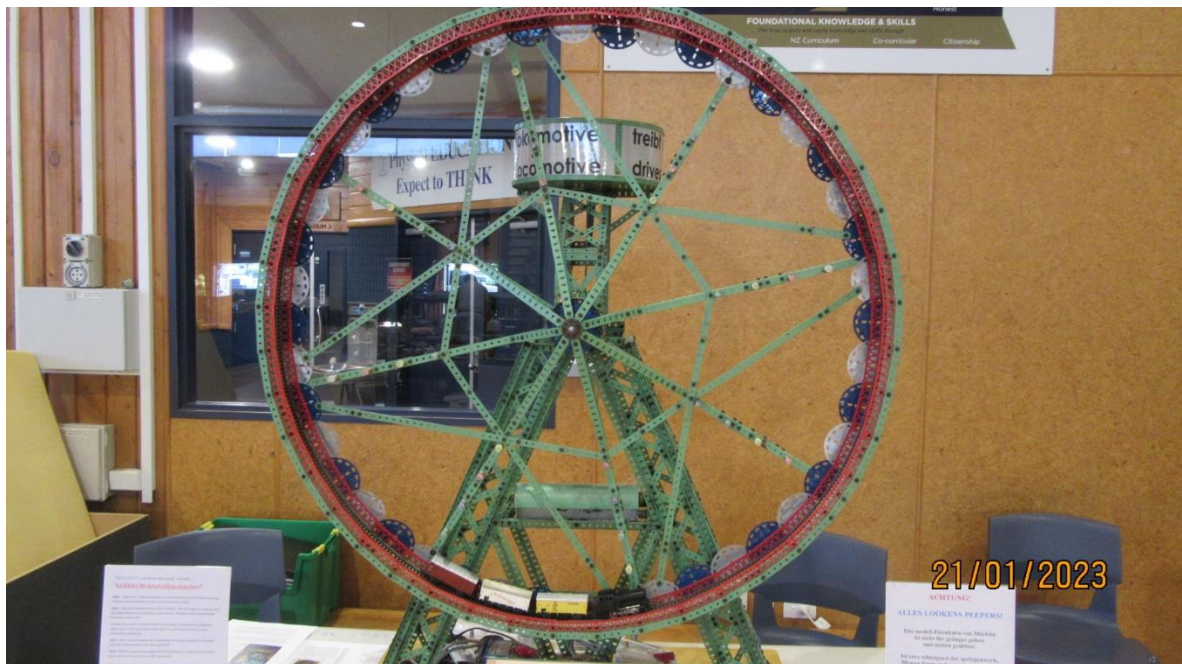
This is the Marklin Club from Wellington who went to a lot of effort to be here. Thank you all very much.



The 1st is their kids layout with 7 separate controllers for the kids.



The Marklin Wonder Wheel is also a great lesson in what a little bit of traction can achieve.



Their main layout is a maze of tracks and many other items to find.

First was this sign. Translated by Google Translate it reads.

ATTENTION!

ALL LOOKING PEEPERS!

The Marklin model railway isn't for finger-picking and mid-grabbing.

It's easy to snap the sprung work, blown fuse and pop the cork with pointed sparks.

It's not for working at the fool!

The rubber neck sightseer keep the cotton picken hans in the pockets muss; relax and watch the blinking light.

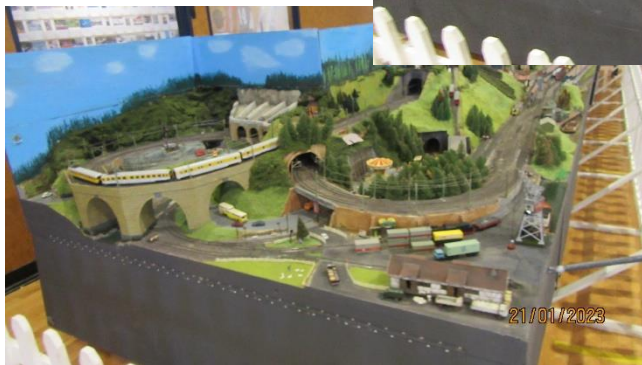
Thank you very much.



There are some obvious mistranslations in that text. I think their German may need a bit more work.

The general theme though appears to be 'Keep your mits off'

Now their layout.



Mustn't forget Damien & his Thomas. Always popular with the young ones.



Alf Bigwood had his trucks there along with a display of saws with some history & his ironing board Z Gauge.



Russel Jones bought his 120-gauge NZR layout. Great scenery & being N gauge track with bigger bodies to represent NZ narrow gauge the locos and rolling stock looked great.





A few scenes of the hall. Busy as you can see.



MEMBER LAYOUTS:

Last year we had a very successful home visit schedule where various members opened their homes to ALL members to come & see their own layouts.

We will be doing this again this year so please if you have a home layout **regardless of the finished state** then please let me know so we can add you to the list. The more layouts we can visit the better we can gel as a team.

The more ideas that you can get from other members who may be able to help you with that issue you just cannot find a way around. This happened for me and it made all the difference.

These visits were once a month on Sunday afternoon for about 2 hours.

It would be great to have different layouts to see.

GENERAL:

WAIHI:

Just a quick update on the new old locos that have arrived.

They have been moved but at this stage little else. I guess these things take time.

If you are interested and can help I am sure that they would welcome you with open arms.



TREE MAKING:

The following was provided by Mike Oldfield for those looking at trees. Sorry about the quality.

How to model broad leaf trees

24 January 2023

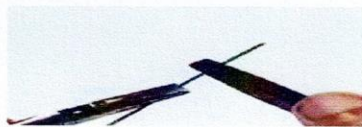


Michael Russell describes the creation of a simple tree, suitable for most layouts and adaptable to all scales.

Step 1: Building the Armature

This article details my first attempts at building realistic trees using the construction methods outlined in the Modelling Trees series of books by Gordon Gravett (see panel on 52). My primary goal in this attempt has been to learn the skills needed and therefore a generic tree has been produced. Simplifying the construction in this way, without having to concentrate on a specific prototype, has allowed me to focus my efforts accordingly.

Using this 'divide and conquer' method is recommended whenever you have a big, multi-skilled modelling task to tackle. It allows you to practice and to make mistakes with minimum wastage to your time and resources. Whilst the Modelling Trees books are excellent, some of the basic construction methods are not covered in a basic step-by-step fashion. If you have found starting difficult, and producing the armature daunting, then my experiences should give you the confidence to give it a go.



1.

Hold two pieces of wire together with pliers about 2cm from the end. Using another pair of pliers, twist the wires together for at least 1cm, twisting in one direction only.



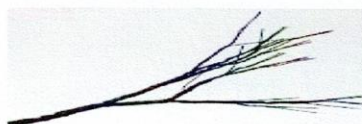
2.

Twist a third wire in with the first two wires where the original twist ends. Do this for a length of at least 1cm. You may like to start with your fingers and tighten.



3.

Now take three sets of twisted wire from steps 1 and 2, then twist these together. Don't spread the wires out yet - it is easier to work with them together.



4.

To make larger limbs for the tree take several sets of the twisted wire from step 3 and then twist them together.



5.

Combine several of these larger limbs to form the main shape of the tree. Use an even number of these larger limbs - I used three.



6.

You can then add smaller branches near the bottom by using branches formed in step 2 (above).



7.

Form roots evenly around the base of the trunk and a central mounting stem so you can easily mount the tree. For the next stage a piece of wood, drilled with a suitable sized hole, will support the tree whilst you work on it.



8.

Shape branches and twigs - ensure none are left straight. Tips of branches are roughly equidistant from each other to maximise the amount of light that reaches the canopy.

9.

Some branches weren't attached very securely - I twisted more wire around the trunk to strengthen them, forming into further branches or scar where a branch has fallen..

10.

I mixed some Milliput and applied this to the tree where the gaps between the wire were the most obvious; this is mainly around the bole and main branches.



Prototype inspiration

If you don't have a compass, you can often tell from a tree which way is north because of moss growth on that side. Use a tooth brush and spatter green paint to represent this. You need to decide which way is north on your layout and be consistent in applying such detail. This ash tree is growing in a park and is accessible from all sides making it easy to model.

Be aware, though, that trees growing in such an environment often lead a cosseted life and may not reflect a typical example in the wild. They won't have been pollarded or coppiced, but they may have had the attention of a tree surgeon.

Step 2: Adding the bark

Mix up a bark mix from PVA glue and All Purpose Filler. Ensure that there are no lumps by mixing thoroughly (this may be more of a problem if the filler is old). You want the mix to be thick enough to fill in the gaps between the wire, but without running. Keep adding glue until all the powder is dissolved - you may have to add a little water.

Add the mixture using a stiff brush starting at the bottom. If any excess amounts accumulate, such as in the forks where branches diverge, then remove with a cocktail stick. Don't be tempted to cover all traces of the wire with one coat, two or three will give better results ensuring that the previous layer has dried before adding more.



Step 3: Painting the bark



1.

Paint a base coat of emulsion, going to the ends of the branches. Remove heavy deposits in the forks of branches with a cocktail stick whilst paint is wet.

2.

Then apply a dilute mix of black and Burnt Umber acrylic to the whole tree. I then made up a stronger mix of the same colours and applied to the ends of the branches.

3.

Finish off the painting by using dry brushing to emphasise highlights and spattering to add moss, etc. The picture above shows this process.

Step 4: Creating the foliage



1.

The fine branches are made from artificial hair (postiche) - such as Greenscene GS319. Make sure this is teased out so the fibres are separated.



2.

Pile the artificial hair onto the ends of the branches - it's best to work on a small area at a time starting at the bottom of the tree. Next, gently spray the clump with hairspray.



3.

If you dislodge it, reposition with tweezers - not fingers! Avoid getting spray where you don't want leaves to stick, for example, on the main trunk.



4.

Before the hairspray dries, sprinkle on foliage material - I used Noch Laub. Do this over paper so you can save the excess material for reuse. If any leaves have stuck to places where you don't want them, then remove with a cocktail stick.



5.

Keep repeating the previous three steps until the whole tree is covered. Then trim the foliage to remove any pieces of artificial hair that stick out. It is easier if you use pointed scissors such as those used in hairdressing. Do this in good light in front of a white background.



Finishing

Spray the tree with a matt varnish to seal the model and to take off any shine left by the hairspray. I used 'The Army Painter' (www.thearmypainter.com) anti-shine varnish, which dried quickly and gave an excellent finish.



Branching out

Making trees certainly takes some practice, so don't expect to produce stunning results immediately. As usual, results are commensurate with the time and effort you invest. Producing trees of the best quality is a laborious process and entails careful research. Trees are a common feature of the landscape and concentrating on non-railway items such as this will allow you to model in a holistic fashion and raise the level of the whole layout.

Expert Tips

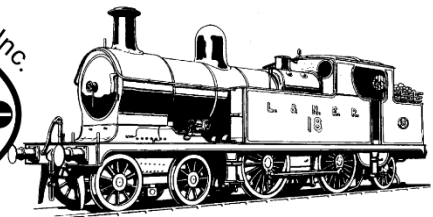
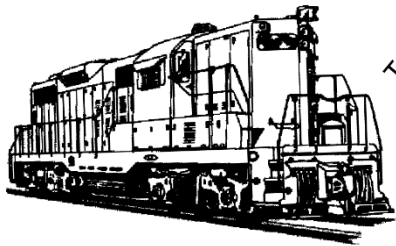
- Don't make your first tree too big; mine is approximately 16cm tall from 30cm long wire.
- If possible, have the final location for the tree ready before you build it; they are bulky to store and are easy to damage.
- Photograph the model tree once it is finished - you may find you want to tweak it after seeing the photos.
- Trees vary between species and, like all living things, differ between instances - therefore always try and model from an actual specimen and try to capture its character.
- A tree is a three dimensional shape and needs to be modelled as such - so wherever possible, when modelling an actual specimen, choose one where you can obtain access on all sides to shoot photographs.

Tools for the job

- 0.36mm wire (copper, aluminium or soft iron)
- Two pairs of pliers
- Side cutters
- Milliput
- PVA glue
- All Purpose Filler
- Small piece of 2" x 1" timber
- Emulsion & acrylic paint
- Tweezers
- Firm hold hairspray
- Foliage material of your choice
- Cocktail stick

TMRC COMMITTEE MEMBERS:

PRESIDENT: MICHAEL OLDFIELD
VICE PRESIDENT: DARRYL JUDKINS
SECRETARY / TREASURER: TREVOR GARDINER
COMMITTEE: KEN CREW
MICHAEL CHRISTENSEN
WADE HUNKIN



NOMINATION FORM

We the undersigned wish to nominate _____

For the position of _____

Proposer _____

Secunder _____

I accept the nomination (*Signature*) _____ Date _____